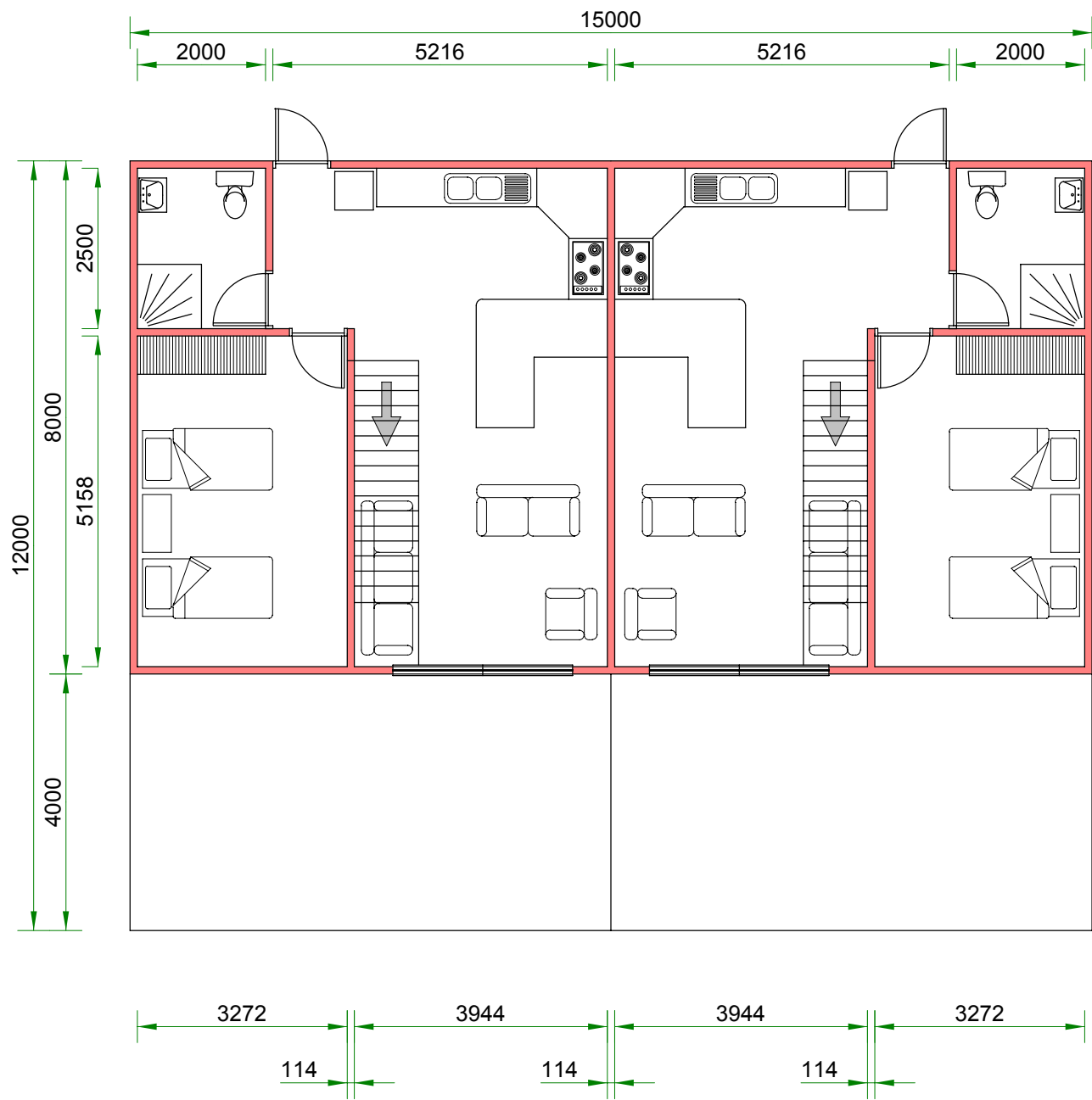
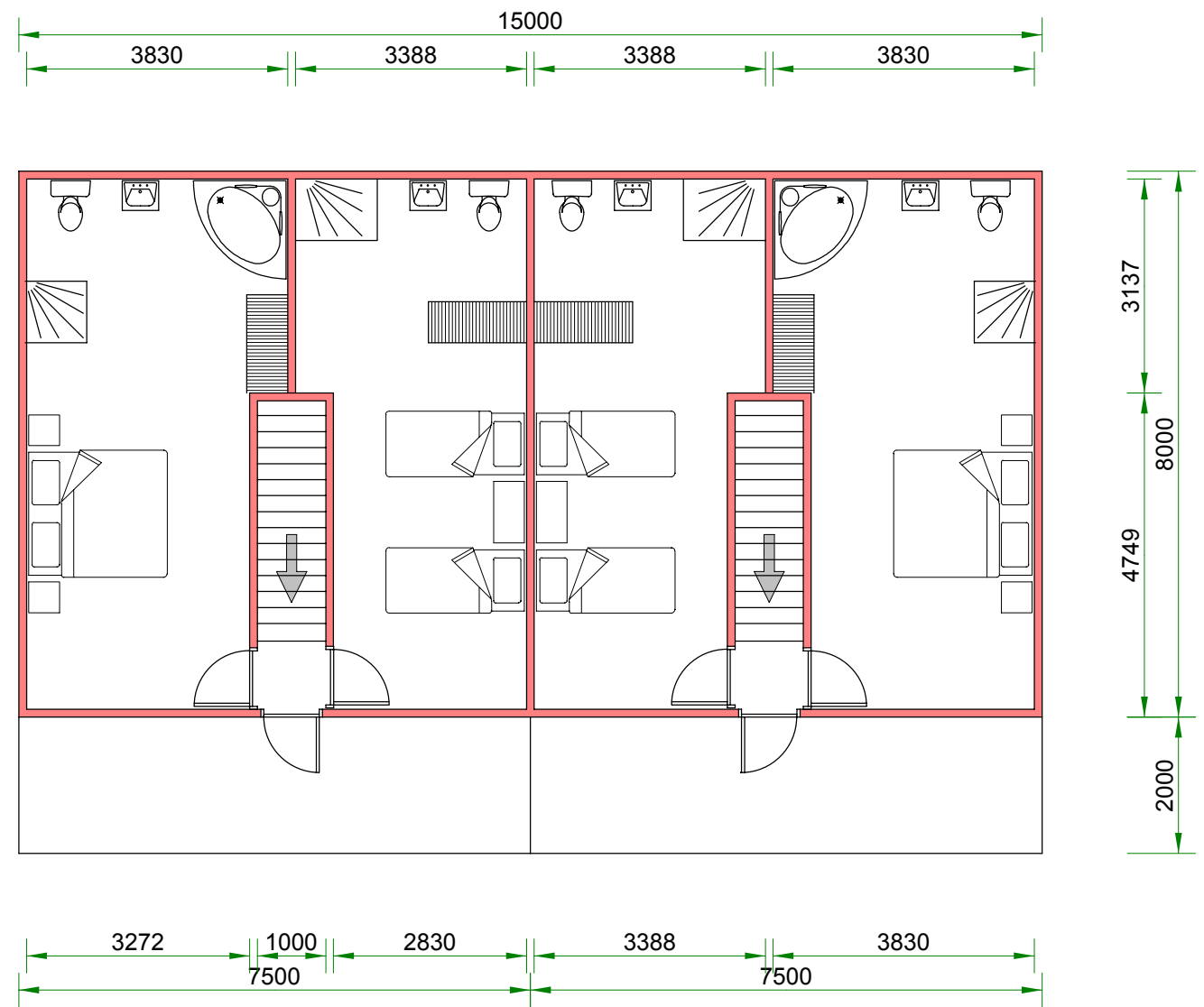


LOWER LEVEL



UPPER LEVEL



JM van der Merwe
 ECSA #200470097
 Pr. Engineering Technologist (Civil)
 PO Box 177, PONGOLA, 3170
 TEL: 034-4131404, FAX: 086-6714183
 jmvdm@mweb.co.za

Client
BOUWER INVESTMENTS L.D.A.
 Ponta 'Do' Ouro
 MOZAMBIQUE

N

 SCALE
1: 100

DRAWN : Johan
 APPROVED :
CO-ORDINATE SYSTEM
 Gauss Conform Projection
 Central Meridian 31° East

TITLE
**PROPOSED NEW DUPLEX
 LOG CABIN HOMES**
 DRAWING NUMBER : 2006/22
 DATE : 6 September 2006